

Language Studies International 2011

Accommodation in the UK



Accommodation in London



The City of London: a rare combination. It is a place where you can find art galleries, famous museums, gourmet restaurants, vibrant theatres and non-stop entertainment along with beautiful and varied architecture and a fascinating history. Whether a first time visitor or someone who has visited the city many times before, London always offers something new and different. Hampstead is one of London's loveliest and most fashionable areas, green and relaxed with a traditional English atmosphere but also very close to the centre of the city.

Homestay



Our homestays are carefully selected and offer students the opportunity to learn more about the British culture in a comfortable setting while studying English in London.

- Welcoming and friendly atmosphere
- Carefully selected by our Accommodation Officers and visited on a regular basis
- Choice of single rooms (or twin rooms if two students book for the same time period) with bed and breakfast or half-board
- All bed linen and towels provided
- Most host families will wash the student's laundry once a week at no additional cost or will suggest nearby laundry facilities.
- Good and reliable transport links
- Check-in between 7 am and 11 pm
- Executive Homestay Option:
 - Executive Homestays are often of a higher standard than other home stay accommodation. They are evaluated in terms of décor and size; location (although not necessarily closer to LSI). Some have private bathroom facilities (ensuite or sole use) and/or extra facilities such as a television in the bedroom or access to the internet



- Homestay prices per person per week (based on London transport zones):

ZONE 2

- Single room, B&B: £155
- Single room, HB: £190

ZONE 3

- Single room, B&B: £145
- Single room, HB: £180

ZONES 4-6

- Single room, B&B: £125
- Single room, HB: £160

Twin Room prices available on request.



- Homestay supplement prices per person per week:
(Please note that during the summer peak periods, we cannot guarantee that extra days in homestay will be available.)
 - Executive single room, B&B / HB: £25
 - Executive single room, B&B / HB, private bath: £75
 - Christmas holiday supplement (24 Dec 2011 – 02 Jan 2012): £30
 - Summer supplement (26 June – 28 Aug 2010): £15

* During peak periods our homestay accommodations may be provided by highly respected and qualified accommodation agencies that operate to the same high standards as LSI.

Key:

B&B – Bed and Breakfast (Breakfast only)

HB – Half Board (Breakfast and Dinner)

FB – Full Board (Breakfast, Lunch, Dinner)

Accommodation in London

Residences - London Central

These options are more suitable for an independent student, who is looking for clean, basic accommodation at an economic price. All students must be 18+ unless otherwise noted. All residences are subject to a cancellation penalty and no refund for curtailment of stay. We strongly recommend the purchase of travel insurance to cover any unforeseen eventualities. * indicates that a residence has a minimum stay of 4 weeks

Name: Schafer House Hall of Residence

Location: ZONE 1; Walking distance to Oxford Street, 3 minute walk to Warren Street

Underground, 5 minute walk to LSI London Central

Rooms: Flats w/ 5 single bedrooms w/ shower, two toilets and fully equipped kitchen; each single room has wardrobe, washbasin and bed

Private Bathroom: No, shared bathroom in each flat

Meals: Self-catering

Facilities: Lounge w/TV, laundry room

Prices (per person per week): £220

Availability: Summer only

Other: Bed linens are provided, students advised to bring towels, 24 hour security



Name: Liberty Living (Goswell House) *

Location: ZONE 1; 12 minute walk to Angel Underground Station (Northern Line) and close to shops, bars, restaurants, cinemas, etc; about a 10 minute tube ride to LSI London Central

Rooms: 110 single rooms and 5 studios w/wardrobes

Private Bathroom: Yes, ensuite facilities

Meals: Self-catering

Facilities: Fully equipped kitchen/dining area for every 10 rooms, coin-operated laundry facilities

Prices (per person per week): From £250 per week

Availability: Year-round

Other: Bed linens are provided, students must bring towels, 24 hour caretaker and CCTV security system; telephone/internet access for £20 per month/4 week cancellation policy, Sunday arrival date

Name: Britannia City Residence

Location: ZONE 2; close to Canada Water underground station and a 40 minute journey door-to-door to LSI London Central

Rooms: 77 rooms over 7 floors divided into flats

Private Bathroom: No, shared bathroom in each flat

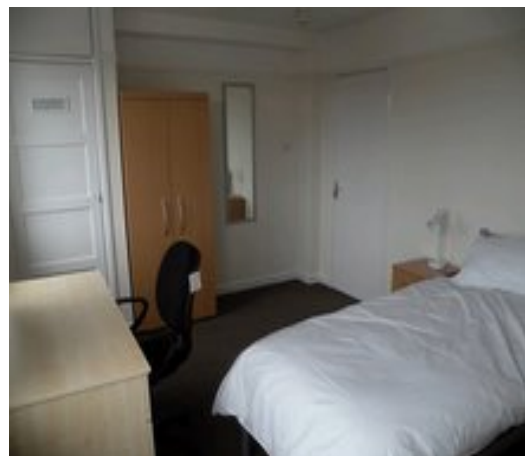
Meals: Self-catering

Facilities: Each flat has a kitchen/diner

Prices (per person per week): £175

Availability: All year

Other: Bed linens are provided and rooms are cleaned weekly.



Accommodation in London



Name: Dinwiddy House

Location: ZONE 1; 6 minute walk to King's Cross Underground/Thameslink (Northern Line); about a 10 minute tube ride to LSI London Central

Rooms: Rooms for over 500 students

Private Bathroom: Yes

Meals: Self-catering

Facilities: Large courtyard garden, fully equipped kitchen

Prices (per person per week): £250, SPECIAL RATE £220 AUGUST only NON-refundable and NON-cancelable

Availability: June - mid September

Name: Beaumont Court Residence*

Location: ZONE 2; 10 minutes' walk to Mornington Crescent station (Northern Line) and close to shops etc; about a 10 minute tube ride to LSI London Central

Rooms: Flats of 5, 6 or 7 single rooms

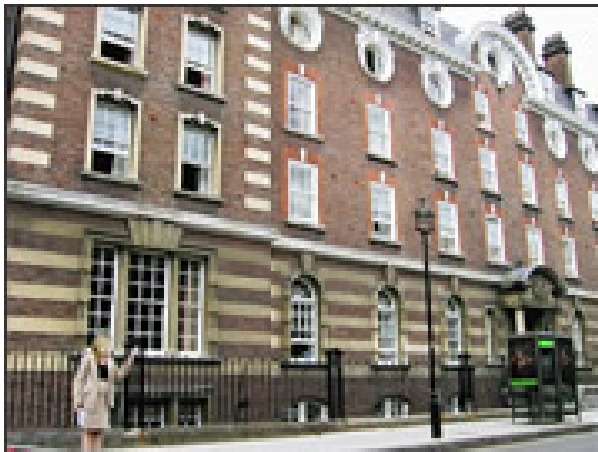
Private Bathroom: Yes

Meals: Self-catering

Prices: From £250 per week

Availability: Year-round

Other: Telephone/internet access,



Name: Nutford House Hall of Residence

Location: ZONE 1; 6 minute walk to Marble Arch Underground (Central Line) and to Oxford Street; about a 25 minute walk to LSI London Central

Rooms: 156 single and 21 twin rooms

w/washbasins, central heating and telephone/internet access

Meals: Half-board provided

Facilities: Garden, music room, bar and 2 lounges w/TVs and video equipment

Prices (per week): Single £330 Twin £270

Availability: Easter, June- August

Other: Bed linens provided and cleaned weekly, rooms cleaned weekly, towels not provided; **very limited availability and non-refundable once booked.**

Name: Lee Abbey*

Location: ZONE 1; 10 minute walk to Earl's Court or High Street Kensington stations

Rooms: Accommodates over 550 students

Meals: Half-board provided

Facilities: Coffee bar, television room, games room, garden

Prices: Single room from £300

Availability: Year-round

Other: Bed linens changed every other week, rooms cleaned weekly. High speed internet; **very limited availability and non-refundable once booked.**



Accommodation in London



Name: Vincent House *

Location: ZONE 1; 5 minute walk to Portobello Market and Notting Hill Gate Underground.

Rooms: Spacious ensuite single rooms' w/ telephone & internet connection

Private Bathroom: Ensuite facilities

Meals: Half-board

Prices (per person per week): Single room £330 per week for the first four weeks and £310 for subsequent weeks.

Availability: Year-round except for July & August 2010

Other: Rooms cleaned daily and linens changed weekly, bath towels are provided; **Minimum stay 4 weeks; Recommended age 21 and older. Please check before booking.**

Name: Alliance House Hall of Residence

Location: ZONE 2; walking distance to Highbury & Islington, 30-minute direct bus ride to LSI London Central

Rooms: Flats w/ 5 single en-suite bedrooms and fully equipped kitchen;

Private Bathroom: Yes

Meals: Self-catering

Facilities: Lounge w/TV, laundry room

Prices (per person per week): From £200, very special rate non-refundable and non-cancellable

Availability: July only.

Other: Bed linens are provided, students advised to bring towels, 24 hour security



Residences- London Hampstead



Name: International Students' Hostel (St. Dorothy's) – **FEMALE ONLY**

Location: ZONE 2; 4-minute walk to Hampstead Underground (Northern Line), 10-minute walk to LSI London Hampstead

Rooms: Single and shared rooms

Bathroom: Shared facilities on each floor

Meals: Half-board (Mo-Th) and B&B (weekends)

Facilities: Study room with internet access, TV lounge, kitchenette, garden, laundry facilities.

Prices (per person per week): Single room £140, Shared twin room £130; **prices include VAT, weekly cleaning, bills & meals**

Availability: Year-round

Minimum Age: 17 years old

Other: operated by nuns; evening curfew (Mon-Thu - 10:30pm, Fri-Sun – 11:30pm) applies but later arrival times possible subject to prior arrangement; possible discounts for long-term stays (over 1 year); **Non-refundable booking fee of £50 (not applicable if you are returning).**

Check in: Sunday by 9pm (other days possible by prior arrangement)

Accommodation in London

Name: Bartrams Residence – FEMALE ONLY

Location: ZONE 2; within a short walk of LSI and Belsize Park Underground station (Northern Line).

Rooms: Single and shared rooms w/washbasins

Bathroom: Shared facilities on each floor

Meals: Half-board (Mon-Fri) and self-catering (weekends)

Facilities: 2 Study rooms, TV lounge, 2 kitchenettes, garden, laundry facilities, spacious dining room, Wifi Access

Prices (per person per week): Single room £185, Shared room £165

Availability: Year-round

Minimum Age: 18 years old

Other: Minimum Stay is 4 weeks. Students receive their own keys; students requesting extra nights must pay the full weekly stay; operated by nuns; no curfew.

Check in: Saturday only, before 8 pm.



Name: King's College

Location: ZONE 2; Quiet area of London Hampstead close to the restaurants/shops and within walking distance of LSI and Hampstead Heath Park

Rooms: Single w/washbasins

Bathroom: Shared facilities on each floor

Meals: B&B

Facilities: Kitchens available to make drinks/snacks, TV lounge, coin-operated laundry facility

Prices (per person per week): From £220 B&B

Availability: July – mid September

Minimum age: 18 years old (younger students must be accompanied by an adult)

Other: Vending machines, linens and towels provided, 24 hour security. **Cancellation policy: two weeks**

Name: HYELM

Location: ZONE 2; 5-minute walk to LSI Hampstead

Rooms: twin rooms with washbasins

Bathroom: Shared facilities on each floor

Meals: Half Board (Mon-Fri), full board (weekends)

Facilities: study room with internet access, launderette, bar, gym, communal lounges with TV

Prices (per person per week): £165/week

Availability: July & August (mostly)

Age Range: 16 – 25 years old

Other: Bed linens are provided, students must bring towels. Rooms are cleaned on a regular basis. Check-in on Sundays after 2pm.



Year-round residences may also be available. Please contact the school directly

Accommodation in London

Flat Share Accommodation– London Central & London Hampstead



Name: London Solutions Flat share

Location: ZONES 1&2; within walking distance of an underground station

Rooms: Single and shared rooms available in comfortable and simply furnished flats of 4-6 people

Meals: Self-catering

Facilities: Each flat has a kitchen, bathroom and possibly a lounge; communal laundry facilities

Prices (per person per week): Single room £175, shared room £120

Availability: Year-round

Other: Bed linen and kitchen utensils provided on-arrival, towels not provided; non-smoking flats; central heating and hot water included.

Check-in: Saturday 09:30 – 15:00 or Sunday 14:00 – 22:00. Additional charge for Sunday check-in

Please note that this accommodation is not suitable for executive/professional type clients.

Flat Share Accommodation– London Hampstead

Name: HOC Flat share

Location: Conveniently located in Zones 2 & 3 close to Jubilee Line stations. 10 minute ride to Finchley Road station, then a short walk to LSI Hampstead

Rooms: Mainly twins and triples; Limited number of single rooms available

Bathroom: Ensuite and shared facilities available

Meals: Self-catering

Facilities: Fully-equipped kitchen, microwave, TV, free wireless internet connection, weekly cleaning service, all rooms have desks, chairs and lamps.

Prices (per person per week): from Single £200, Twin £50

Availability: Year round

Other: Bed linen is provided. Students must bring their own towels; **Check in: Sundays between 9am and 6pm. For any other times a charge of £40 is applied. Check out: Saturdays.**



Hotels- London Central

This is just a sample of the hotels that London offers. Please contact LSI for more details/options.



Name: The Generator in Central London (Budget Hostel)

Location: 5 minute walk to Russell Square Underground (Piccadilly Line) and 7 minute walk to LSI; close to Oxford Street and Covent Garden

Rooms: Over 800 beds w/dormitory rooms w/bunk beds and washbins; private rooms available

Private Bathroom: Shared facilities (cleaned daily) on each floor

Meals: Breakfast included, dinner available for £4

Facilities: TV lounge, internet café, games room, self-service restaurant

Prices (per person per week): £100-£225

Other: Party atmosphere, no curfew, 24 hour reception

Prices (per person per week): £100-£225

Other: Party atmosphere, no curfew, 24 hour reception

Accommodation in London

Name: Bedford Hotel**

Location: Close to the British Museum and Covent Garden, 10 minute walk to LSI and Oxford Street

Rooms: 184 single, double and triple rooms w/satellite TV and coffee/tea making facilities

Private Bathroom: Yes

Meals: Full English breakfast included

Facilities: Restaurant/bar, lounge, private garden

Prices (per night): £75-£110



Name: Tavistock Hotel**

Location: Near King's Cross and Euston Underground, 15 minute walk to LS and city centre

Rooms: 343 single, double and triple rooms w/satellite TV and coffee/tea making facilities

Private Bathroom: Yes

Meals: Full English breakfast included

Facilities: Restaurant/bar, conference facilities

Prices (per night): £70-£100

Other: Computer access available upon request

Name: Imperial Hotel***

Location: Russell Square, 5 minute walk to LSI

Rooms: 448 single, double and triple rooms w/satellite TV, coffee/tea making facilities, trouser press and minibar.

Meals: Breakfast included

Facilities: Restaurant/bar, lounge, internet kiosk, shopping arcade

Prices (per night): £75-£110

Other: Computer access and hairdryer available upon request



Name: Radisson Edwardian Grafton****

Location: Next to Warren Street tube station, good quality hotel only 7 minutes' walk from LSI

Rooms: 330 luxury rooms and suites: single, double and triple rooms' w/TV, mini bar, direct dial telephone, bathroom and in-room internet access, access to gym

Meals: Breakfast included

Facilities: Various restaurants nearby

Prices (per night): £90-£150



Name: St Giles Hotel****

Location: Near Tottenham Court Road and 5-10 minute walk to LSI, walking distance of Soho and the West End

Rooms: 385 single, double and triple rooms' w/TV, hairdryer, coffee/tea making facilities

Facilities: Italian restaurant, rotisserie restaurant, lounge, gym, indoor pool

Prices (per night): £75-£130

Accommodation in London

Hotels- London Hampstead



Name: Dillon's Hotel (B&B)

Location: 15 minute walk from LSI in the Belsize Park area within walking distance of restaurants, shops, pubs, and Hampstead Heath Park

Rooms: 13 rooms w/TVs

Bathroom: Several rooms' w/ensuite facilities

Meals: Breakfast included

Prices (per night): from Standard single £45, ensuite single £60, standard twin £70, ensuite twin £85

Other: *One night's deposit required to ensure reservation. One night's charge is taken in case of late cancellation or no show.*

Name: Dawson House Hotel**

Location: Tree-lined residential street 20 minutes from LSI, close to many transport links

Rooms: 15 rooms w/single, double, triple and family accommodation available

Bathroom: ensuite facilities

Meals: English breakfast included

Facilities: TV, telephone and coffee/tea making facilities available

Prices (per night): from Single £56, Twin £87



Name: Quality Hotel**

Location: Leafy street near Finchley Road. LSI is about 20 minutes away.

Rooms: Equipped w/direct dial phone, trouser press, hairdryer, TV, radio

Bathroom: ensuite facilities

Facilities: Lounge, bar

Prices (per night): from Single £85; Twin £98

Other: Complimentary tea and coffee, room service



Please contact LSI London Central and LSI London Hampstead for more information:

LSI London Hampstead

13, Lyndhurst Terrace
London NW3 5QA
Tel. +44 (0)20 7794 8111
Fax. +44 (0)20 7431 5681

Email: ham@lsi.edu

www.lsi.edu

LSI London Central

19-21, Ridgmount Street

London WC1E 7AH
Tel. +44 (0)20 7467 6500
Fax. +44 (0)20 7323 1736

Email: lon@lsi.edu
www.lsi.edu

Accommodation in Brighton



Brighton's seafront and parks offer a huge range of sports and amusements and the hills behind the town have some beautiful golf courses and walking routes. The architecture affords some fascinating glimpses of the past and the town is also an important cultural centre and a paradise for shoppers. All this combined with a mild climate makes Brighton a favorite destination for visitors of all ages, all year around.

Homestay



Our host families are carefully selected and offer students the opportunity to learn more about the British culture in a comfortable setting while studying English in London.

- Welcoming and friendly atmosphere
- Carefully selected by our Accommodation Officer and visited on a regular basis
- Choice of single rooms (or twin room if two students book for the same time period) w/ bed and breakfast or half-board
- All bed linen and towels provided
- Most host families will wash the student's laundry once a week at no additional cost or will suggest nearby laundry facilities.
- Good and reliable transport links
- Executive Homestay Option:
 - Executive Homestays are often of a higher standard than other home stay accommodation. They are evaluated in terms of higher standard of décor and size; area of home (although not necessarily closer LSI); w/private bathroom facilities (although not necessarily ensuite); extra facilities such as a television in the bedroom or access to the internet
- Homestay prices per person per week:
 - Single room, B&B: £110
 - Single room, HB: £140
 - Twin room, B&B: £90
 - Twin room, HB: £120
 - Executive single room, B&B, private bath: £150
 - Executive single room, HB, private bath: £180
- Homestay supplement prices per person per week:
 - Christmas holiday supplement (24 Dec 2011 – 02 Jan 2012): £30
 - Summer supplement (26 June – 28 Aug 2011): £15



Key:

B&B – Bed and Breakfast (Breakfast only)
HB – Half Board (Breakfast and Dinner)
FB – Full Board (Breakfast, Lunch, Dinner)

Accommodation in Brighton

Residences – Brighton

Name: Bedford Square

Location: In the city centre (Bedford Square), 20 min walk from LSI

Rooms: Single and double rooms, 1 triple room

Private Bathroom: No, shared with 4-5 people

Meals: Self-catering

Facilities: Each room has a bed, desk & chair, and access to shared showers and toilets on each floor

Prices (per person per week): Single room: £150, Double room: £120 / £200 deposit

Availability: July 3rd to August 27th, 2011

Other: Rooms are serviced daily



Hotels – Langfords Hotel

Name: Langford's Hotel

Location: 10 minute walk to LSI near Hove shops and restaurants

Rooms: 60 single and double rooms

Private Bathroom: Yes, all ensuite

Meals: Breakfast included

Facilities: Restaurant/bar

Prices (per person): Single room from £50, double room from £95

Availability: Year-round

All prices are liable to change



Hotels- Beach Hotel

A beautiful hotel located in a historic Georgian square just off the beach right in the heart of the city, The Beach Hotel has beautifully decorated rooms overlooking gardens and the sea

Location: Central Brighton, 5-10 minutes from LSI by bus or a 20 min walk.

Rooms: Single, double and family suites (sleeps 4) available with en-suite facilities.

Price per person per night: Single Bed & Breakfast £35

Twin/Double Bed & Breakfast £70

Family suites £90

Availability: Year round. The Beach Hotel is extremely popular, so please book in advance!

Other: Room service and daily cleaning services are



Please contact LSI Brighton for more information:

LSI Brighton

13, Ventnor Villas

Brighton BN3 3DD

Tel. +44 (0)1273 722 060

Fax. +44 (0)1273 746 341

Email: bri@lsi.edu

www.lsi.edu

Accommodation in Cambridge



Cambridge is known all over the world for its University. Many of the colleges, with their amazing architecture and gardens are open to the public. The University atmosphere of this town makes it the ideal place to study and experience the traditional English culture. Being a small town, everything is within easy reach and one of the best ways to travel and experience its beauty is by bike!

Homestay



Our host families are carefully selected and offer students the opportunity to learn more about the British culture in a comfortable setting while studying English in London.

- Welcoming and friendly atmosphere
- Carefully selected by our Accommodation Officer and visited on a regular basis
- Choice of single rooms (or twin room if two students book for the same time period) w/ bed and breakfast or half-board
- All bed linen and towels provided
- Most host families will wash the student's laundry once a week at no additional cost or will suggest nearby laundry facilities.
- Good and reliable transport links
- **SUNDAY ARRIVALS ONLY**
- Homestay prices per person per week:
 - Single room, B&B: £120
 - Single room, HB: £150
 - Twin room, B&B: £100
 - Twin room, HB: £130
- Homestay supplement prices per person per week:
 - Christmas holiday supplement (24 Dec 2011 – 02 Jan 2012): £30
 - Summer supplement (26 June – 28 Aug 2011): £15

Key:

B&B – Bed and Breakfast (Breakfast only)

HB – Half Board (Breakfast and Dinner)

Residences - Cambridge

These options are more suitable for an independent student, who is looking for clean, basic accommodation at an economic price. All students must be 18+ unless otherwise noted.

Name: Sedley Court

Location: Heart of student Mill Road area, two miles from the city centre

Rooms: Ensuite single bedrooms with fully equipped kitchen/lounge area

Private Bathroom: Yes, ensuite

Meals: Self-catering

Facilities: Communal launderette (extra cost)

Prices (per person per week): £165

Availability: June 27- August 22 2010

Other: Bed linens (no towels) are provided and changed weekly, rooms cleaned daily, CCTV security, handicap accessibility; **Arrivals must be between the times of 10:00-16:00.**



Accommodation in Cambridge

Name: Centrepoint

Location: Central Cambridge, a short walk to LSI and the city centre

Rooms: Single rooms

Private Bathroom: Yes, ensuite

Meals: Self-catering

Facilities: Full equipped large kitchens shared by up to 7 people, communal launderette (extra cost)

Prices (per person per week): £165

Availability: Year-round

Other: Bed linens (no towels) are provided and changed weekly, rooms cleaned weekly, CCTV security, broadband internet available no smoking allowed; **Arrivals must be between 12:00-18:00 SUNDAY ARRIVALS ONLY**



Name: The Willows (LSI's newly opened residence)

Location: 5-10 minutes from the city centre and a 25 minute walk to LSI

Rooms: Single rooms and double rooms

Private Bathroom: no, shared only, some rooms offer private showers.

Meals: Self-catering

Facilities: Shared kitchen (fully equipped), lounge and dining area, free Wi-Fi internet, free laundry facilities, and live-in warden on site.

Prices (per person per week): £150-£170

Availability: Year-round

Other: Bedrooms are fully furnished and bed linen is available (not towels)

Arrivals must be between 12:00-20:00 SUNDAY ARRIVALS ONLY

**Please note that this residence is offered on a weekly basis (Sunday to Sunday); therefore, and an extra night's stay will not be possible.*



Hotels

This is just a sample of the hotels that Cambridge offers. Please contact LSI for more details/options.



Name: A&B Guest House

Location: Same street as LSI, 5 minute walk to the railway station.

Rooms: Single, double, twin and family rooms w/cable TV, direct dial telephones, tea/coffee making facilities

Private Bathroom: Some w/ensuite some w/shared

Meals: Breakfast included

Prices (per night): From £40-£70

Other: Bed linens and towels are provided and changed regularly.

Accommodation in Cambridge

Name: Centennial Hotel

Location: Close to city centre and LSI

Rooms: Equipped w/TV, telephone, radio, hairdryer and tea/coffee making facilities

Private Bathroom: Yes, ensuite

Facilities: Restaurant w/traditional & continental cuisine, licensed bar

Prices (per night): From £75-£100



All prices are liable to change

Please contact LSI Cambridge for more information:

LSI Cambridge

41, Tenison Road

Cambridge CB1 2DG

Tel. +44 (0)1223 361 783

Fax. +44 (0)1223 467 725

Email: cam@lsi.edu

www.lsi.edu