



Paris

French in France
Private Institute of Higher Education
Academy of Paris

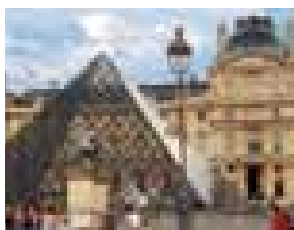
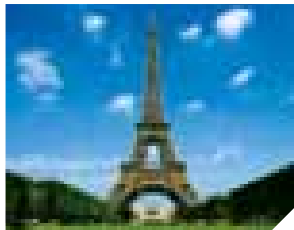


LSI Paris

Situated in a listed, 18th century building at the historical heart of the city, LSI Paris is right by the Louvre and close to the Place Vendome, the Opera and the sophisticated yet bohemian Saint-Honore district. The school is easily accessible by Metro, with Tuileries, Concorde, Opera and Pyramides stations all close by. Computer facilities, a common room and daily newspapers and magazines are provided for student use.

Leisure Programme

The social programme takes advantage of all the myriad attractions that Paris has to offer. Excursions to nearby Versailles and further afield to other parts of France are also possible.



General Courses

Standard 20 see p4

- 14 students max. (average 9)
- All levels

Intensive 30 see p4

- 14 students max. (average 9)
- All levels

Afternoon Course see p4

- 14 students max. per class
- All levels
- Conversational French/ Business French/Exam Preparation

Plus Courses see p4

- All levels

Starting dates for Elementary to Advanced levels: each Monday

Starting dates for students at Beginner level: Jan 4, Feb 7, Mar 7, Apr 4, May 2, Jun 6, Jul 4, Aug 1, Sep 5, Oct 3, Nov 7, Dec 5

Examination Courses:

Diplôme d'Etudes en Langue Française (D.E.L.F.)

- Intensive 30 with DELF preparation in afternoon
 - 8 weeks
 - Levels A2/B1/B2
- Please contact LSI Paris for starting dates

Test D'Evaluation de Français (TEF)/Test d'Evaluation de Français adapté au Québec (TEFAQ)

- Afternoon option on LSI Intensive 30
- Minimum of 2 weeks
- Intermediate level or above

Starting dates: each Monday
For examination dates, see p8-9

Diplômes de la Chambre de Commerce et d'industrie de Paris (CCIP):

Français professionnel - 2 levels (A2 or B1)

Français professionnel médical (B2)

Français professionnel secrétariat (B1)

Français professionnel affaires (B2)

Français professionnel du tourisme et hôtellerie (B1 or B2)

• Afternoon option on LSI Intensive 30
• 8 weeks
• Levels required displayed next to course
Please contact LSI Paris for starting date

International School Year see p6

- Beginner to Upper Intermediate levels
- Starting dates: Jan 4, Feb 7, Mar 7, Apr 4, May 2, Jun 6, Jul 4, Aug 1, Sep 5, Oct 3, Nov 7, Dec 5

Club 50+ see p10

- Elementary to intermediate levels
- 3 activities per week
- Starting dates: Mar 14, May 9, Jun 20, Sep 5

Executive Courses One-to-One

9 Day Compact course see p33-35

Public Holidays

No instruction on the following dates: Jan 3, Apr 25, Jun 2, 13, Jul 14, Aug 15, Nov 1, 11

School is closed from Dec 24, 2011 to Jan 2, 2012 inclusive.

LSI Course Prices in € Prices for tuition only

Courses	1 wk	2-3 wks	4-11 wks	12-15 wks	16-19 wks	20+ wks
Standard 20	305	280	250	235	225	215
Intensive 30	420	360	335	315	300	290
TEF/TEFAQ		360	335	315	300	290
Afternoon Course	155	140	125	120	115	110
Club 50 + (wks)						1075(2)

Exam Preparation Courses

DELF (wks)	2680(8)
CCIP (wks)	2680(8)

Courses for Individuals

Plus Course Supplement: 5 lessons/10 lessons	375/750
Individual lesson	75

ISY - International School Year	24 wks	30 wks	36 wks	48 wks
20 lessons per week	4920	6150	7020	9360
30 lessons per week	6300	7875	9270	12360

Examination Fees

DELF A2/B1	€205
DELF B2	€265
e-TEF Compulsory	€115
e-TEF Optional	€105
e-TEFAQ	€140

Additional Fees

Registration fee	€75
Course materials per wk (up to max. of 20 weeks)	€9
Airport transfers (one way): Roissy CDG/Orly Beauvais - prices on request	€85

Accommodation

Accommodation placement fee	€60
-----------------------------	-----

Homestay

per person, per week:	
Single room B&B	€208
Single room Semi HB*	€258
Single room HB	€278
Single room HB in the suburbs of Paris (Zones 2/3)	€245
HB is compulsory for under 18s.	
* No evening meal on Fri. or Sat.	

Student Residences

prices on request, subject to availability

Hotel

2, 3 and 4 star hotel prices available on request.

Executive Course Prices in € See page 35

